

# BLUE CONSTRUCTION CO.

**Solid foundations for a brighter future**

BCC is a customer-focused general contractor with a clear mission of constructing what matters for the long-term success of employees, clients and strategic partners.

[www.bcc-saudi.com](http://www.bcc-saudi.com)

# Company Introduction

---



Established in 2016 by Mr. Aminullah Amiri, Blue Construction Company (BCC) has earned a reputation for delivering innovative and reliable solutions in the construction and technology sectors. With a strong focus on precision and excellence, we specialize in a wide range of services, including construction, security systems (CCTV and gate barriers), networking, access control, intercom systems, automation, maintenance, fabrication, finishing work, equipment supply, and manpower provision.

Our commitment to quality and innovation has led us to successfully complete notable projects . At BCC, we combine technical expertise, skilled manpower, and advanced solutions to meet diverse client needs, building a future of trust and sustainability.



# Chairman Message

With immense pride, I welcome you to Blue Construction Company (BCC). Our unwavering commitment to excellence drives us across diverse domains, including construction, security systems, networking, automation, equipments and manpower supply. Through innovation and a dedication to quality, we have forged strong partnerships and successfully delivered prestigious projects.

At BCC, integrity, collaboration, and excellence form the foundation of our operations. We are passionate about turning visionary ideas into reality by leveraging skilled manpower and advanced technologies, always striving to surpass client expectations while promoting sustainable practices.

I extend my heartfelt gratitude to our esteemed clients, trusted partners, and dedicated team for their continued support and trust. Together, we look forward to building a future shaped by innovation, progress, and enduring success.

**Aminullah Amiri**

**Chairman**

**Blue Construction Company (BCC)**





## OUR MISSION

Our mission at Blue Construction Company (BCC) is to deliver innovative and high-quality solutions across construction, security systems, networking, and automation.

We are committed to exceeding client expectations through advanced technology, skilled expertise, and sustainable practices while fostering long-term partnerships built on trust, integrity, and a shared vision for success.

## OUR VISION

To be a trusted leader in the construction and technology sectors, recognized for delivering innovative, sustainable, and high-quality solutions.

At Blue Construction Company (BCC), we strive to set new industry standards by fostering lasting partnerships, embracing advanced technologies, and creating value for clients while contributing to a better-built future.

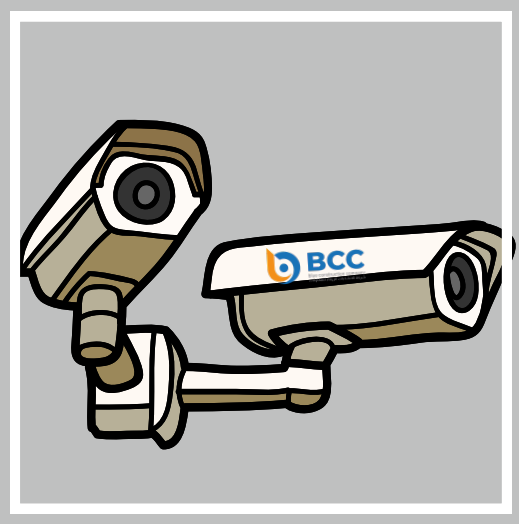
## OUR VALUE

we value excellence, integrity, and innovation. Our commitment to delivering high-quality solutions is guided by transparency and collaboration with clients and stakeholders.

We prioritize sustainability by adopting responsible practices and leveraging advanced technologies to meet evolving industry needs while consistently exceeding client expectations.



# KEY PRODUCTS & SERVICES



## SECURITY SYSTEM

BCC specializes in providing advanced security system solutions, including CCTV surveillance, parking barriers, networking, and access control systems. Our innovative services are designed to enhance safety, efficiency, and connectivity, delivering customized and reliable solutions that meet the unique needs of businesses and organizations across various industries.



## CONSTRUCTION

BCC delivering exceptional construction services, including residential, commercial, and industrial projects. We focus on precision, quality, and innovative solutions to meet client requirements. From initial planning to project completion, our expert team ensures timely execution, sustainable practices, and superior craftsmanship for lasting and impactful structures.



## MANPOWER

We provides reliable manpower supply services tailored to meet diverse industry needs. We offer skilled, semi-skilled, and unskilled personnel for construction, maintenance, and specialized projects. Our commitment to quality ensures that clients receive competent, well-trained, and safety-conscious workers to support their operations and achieve project excellence.



## EQUIPMENT SUPPLY

BCC delivers complete equipment supply solutions for construction, maintenance, and industrial projects. We provide a diverse range of dependable and high-performance machinery and tools tailored to client needs. Our dedication to quality ensures prompt delivery and equipment that boosts productivity and operational effectiveness.



## MAINTENANCE

provides complete maintenance services to ensure the durability and peak performance of buildings and facilities. Our expert team manages regular inspections, repairs, and system improvements with a focus on quality and efficiency. We deliver customized solutions that reduce downtime, boost safety, and extend asset lifespan.

# OUR SERVICES

---

- **Construction Projects:**

Expertise in delivering high-quality residential, commercial, and industrial construction solutions.

---

- **Facilities Management, Operations, and Maintenance:**

Comprehensive services to ensure optimal performance and longevity of facilities.

---

- **Security and Surveillance Systems:**

Advanced security solutions including CCTV and access control systems, gate barrier and automation.

---

- **Fire Protection Systems Maintenance:**

Regular maintenance and servicing of fire protection systems to ensure safety and compliance.

---

- **Fabrication, Welding & Parking Sheds:**

Delivering high-quality custom fabrication and welding solutions for industrial needs, along with designing and constructing durable, functional parking sheds tailored to client specifications.



# OUR SERVICES

---

- **Fence Work:**

We offer expert fence installation for residential, commercial, and industrial sites. Our services include chain-link, steel, and security fencing, ensuring durability, safety, and compliance with project specifications and client needs.

---

- **Electrical, Cable Pulling, and Termination Services:**

We offer professional electrical, cable pulling, and termination services for residential, commercial, and industrial projects. Our team ensures precise installation, reliable connections, and full compliance with safety and quality standards for efficient power distribution.

---

- **Interior Décor & Woodwork:**

Offering expert interior décor solutions, including custom woodwork and wood décor designs, tailored to enhance aesthetics, functionality, and client vision across residential, commercial, and industrial spaces.

---

- **Industrial Services:**

We deliver comprehensive industrial services including equipment installation, maintenance, fabrication, and plant support, ensuring operational efficiency, safety compliance, and timely execution across various industrial sectors.

# OUR CLIENTS

أرامكو السعودية  
saudi aramco



الشركة السعودية للكهرباء  
Saudi Electricity Company

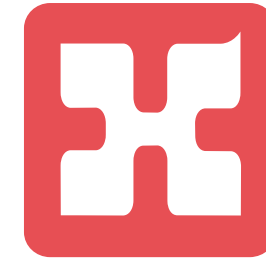


نيوم NEOM



مجموعة بن لادن السعودية  
SAUDI BINLADIN GROUP

د. سليمان الحبيب  
DR SULAIMAN AL HABIB  
المجموعة الطبية medical group



شركة مجمع سلطنة الصناعي  
Sultanah Allied Industries Co.



SINOPEC



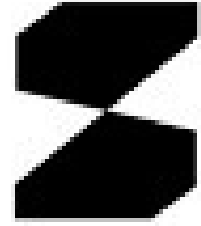
مجموعة الرشيد  
Al-Rushaid Group



TRADING AGENCIES CO.  
شركة التوكيلات التجارية



# OUR CLIENTS



Saudi Lime  
Industries Co.



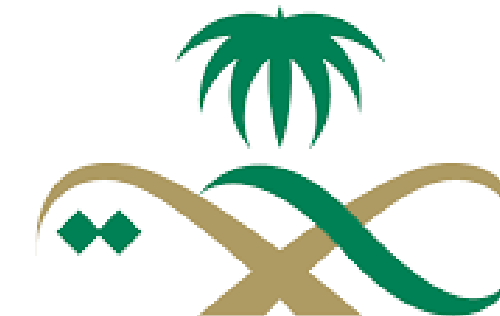
الهيئة الملكية لمحافظة العلا  
Royal Commission for AlUla



الهيئة الملكية للجبيل وينبع  
Royal Commission for Jubail & Yanbu



# TARGETED CLIENTS





# TARGETED CLIENTS



# WE BUILD THE FUTURE



We build the future by constructing and servicing industrial facilities, networking, CCTV, access control, equipment supply, and manpower. Through responsible business practices, we ensure sustainable progress, delivering innovative solutions with reliability and efficiency. Our commitment to quality, safety, and excellence drives growth, empowering industries and communities for a better tomorrow.

## 01 Efficiency

We deliver projects on time with streamlined processes, minimizing delays.

## 02 Quality

Our work meets the highest industry standards, ensuring lasting excellence.

## 03 Customer

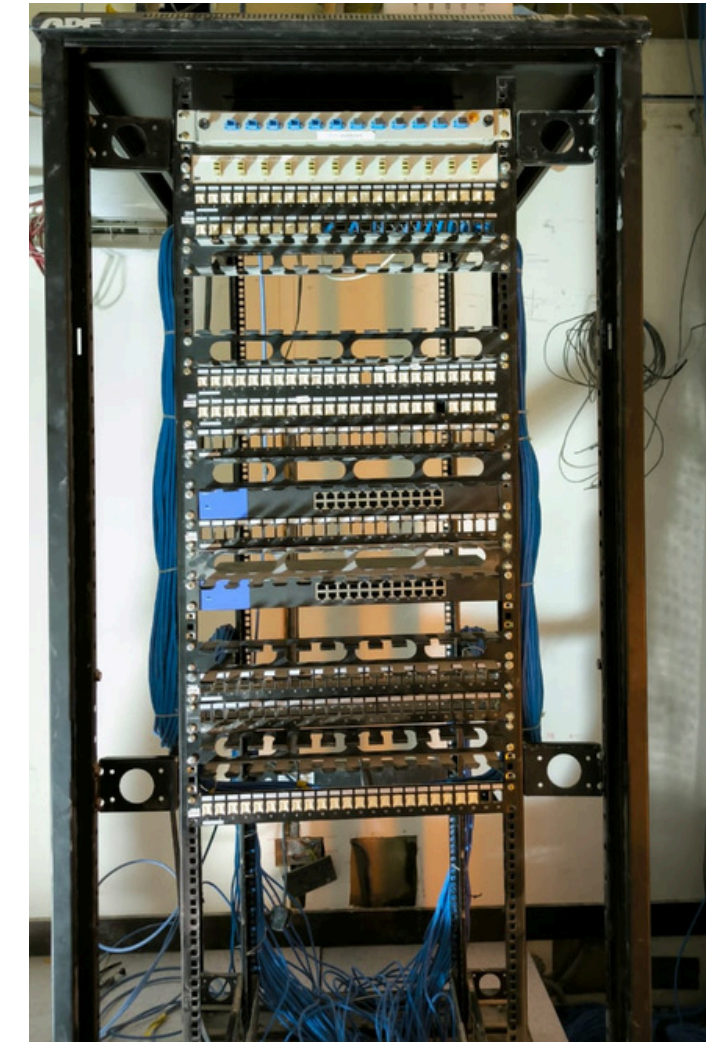
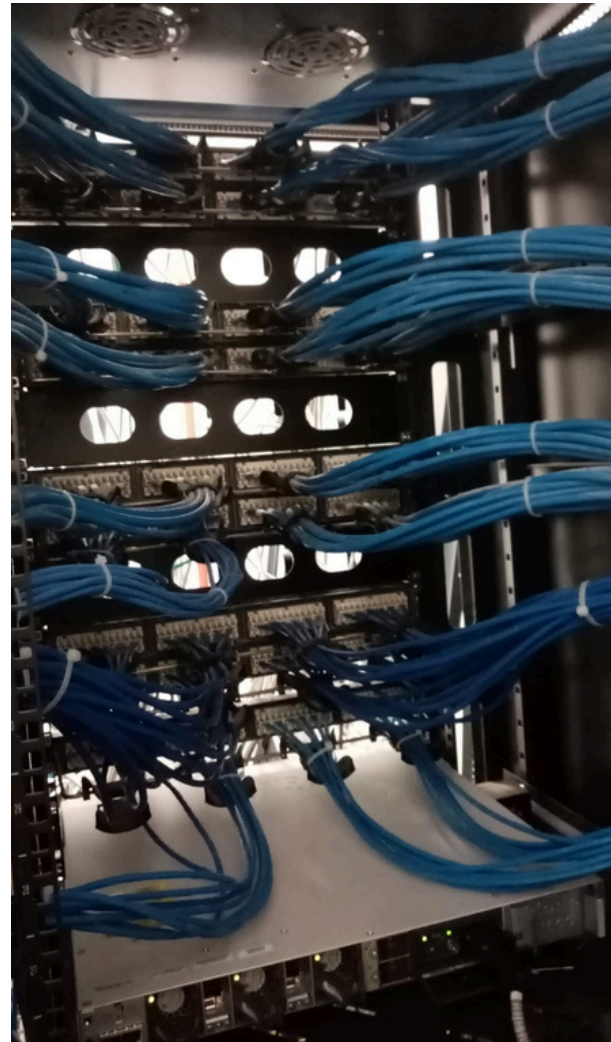
We prioritize client needs, offering tailored solutions with dedicated support.

## 04 Innovation

We integrate the latest technology to enhance performance and security.



# OUR RECENT PROJECTS

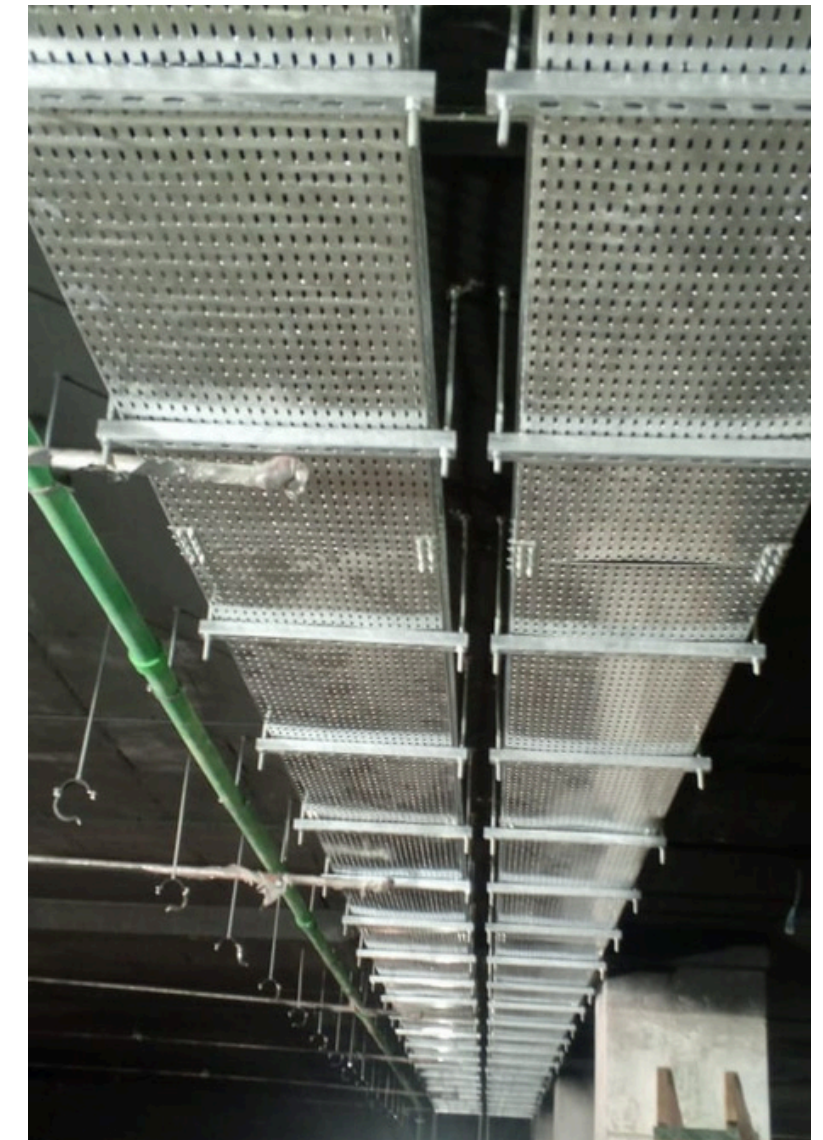


## Networking Systems:

We provide prestigious networking system solutions, ensuring secure, high-speed, and reliable connectivity. Our advanced technology enhances communication, efficiency, and performance, meeting industry standards for seamless operations across various sectors with cutting-edge infrastructure.



# OUR RECENT PROJECTS

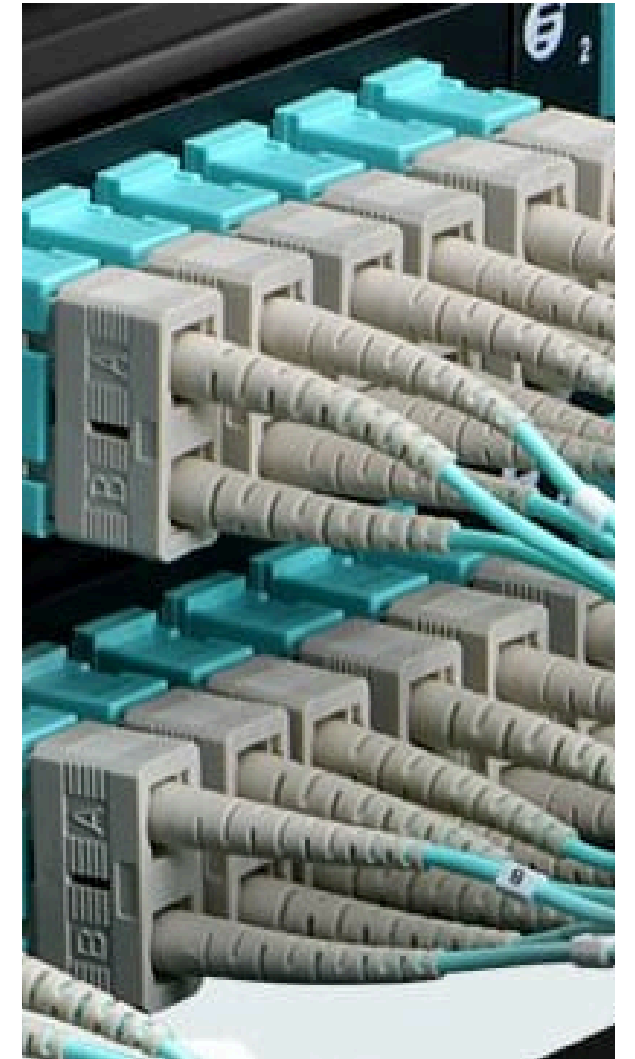
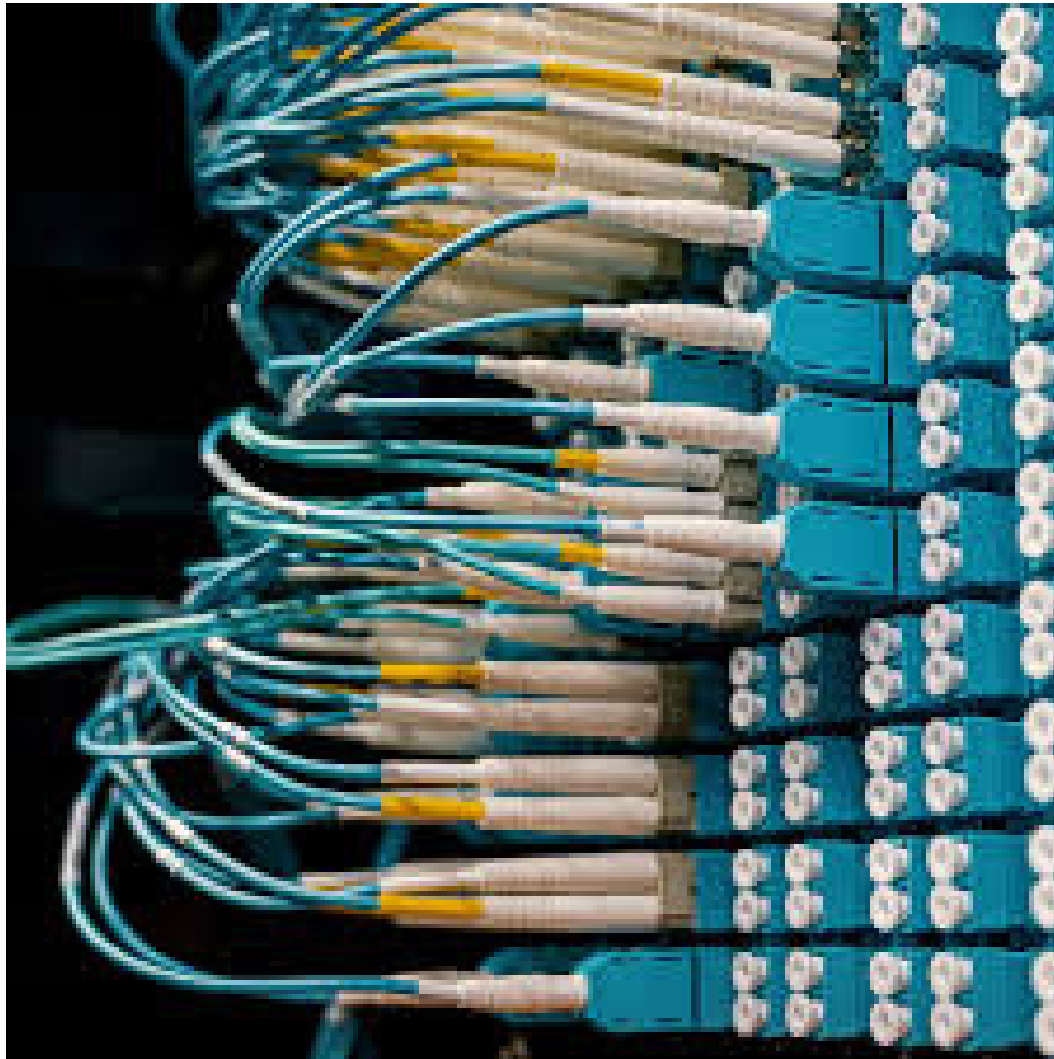


## Cable Pulling, Termination, and Installation Services:

We specialize in high voltage cable pulling, termination, and installation services for low and high voltage systems. Our skilled team ensures precise execution, safety compliance, and reliable connections for power, control, and communication systems.



# OUR RECENT PROJECTS



## Fiber Networking and Syncing :

We provide fiber networking and syncing solutions to ensure high-speed data transmission and precise system coordination. Our services support efficient communication, seamless connectivity, and reliable performance across industrial, commercial, and enterprise networks.



# OUR RECENT PROJECTS



## Monitor Rooms :

We design and equip high-tech monitor rooms with advanced surveillance, networking, and access control systems, ensuring real-time security monitoring, efficient operations, and seamless integration for enhanced safety and performance.



# OUR RECENT PROJECTS



## Entrance Gate Security Access System :

Our Entrance Gate Security Access System provides controlled entry, advanced authentication, real-time monitoring, efficiency, reliability, and enhanced safety for secure and restricted premises.



**Solar Cameras**



**Fish Cameras**



**Indoor Cameras**



**ANPR Cameras**



# OUR RECENT PROJECTS



**Boom Barrier System**



**Access Control System**



**Telephone System**



## CCTV Cameras :

We offer advanced CCTV security systems with high-resolution cameras, real-time monitoring, remote access, night vision, motion detection, and reliable surveillance for maximum safety.



# OUR PRODUCTS



**500 GPM -  
Make Seimens Germany**



**7 HP Filling Pump with 200 Feet  
Head Make Seimens Germany**



**Fire Hose Reel - 100 Feet  
A class Quality**



**Fire Hose Reel Box -  
18 Gauge with Glass Door**



**Breeching Alert  
Two Way**



**Breeching Alert  
Two Way**



**NRV -  
Non Return Valve**



**Landing Valve**

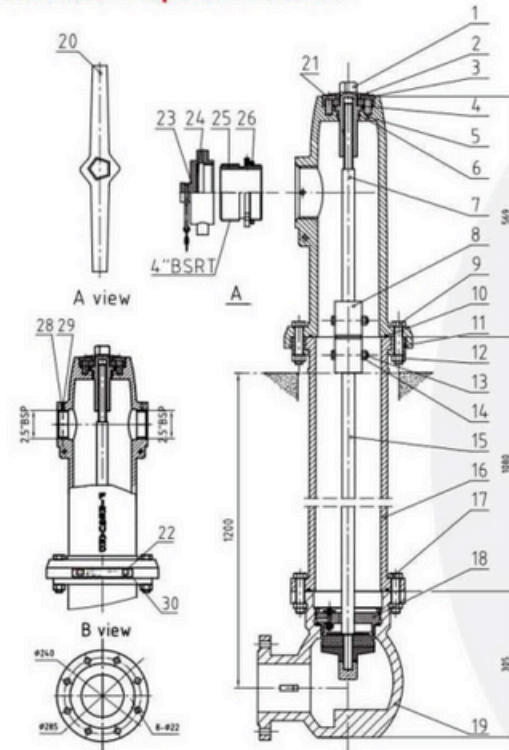


**Pressure  
Reducing Valve**

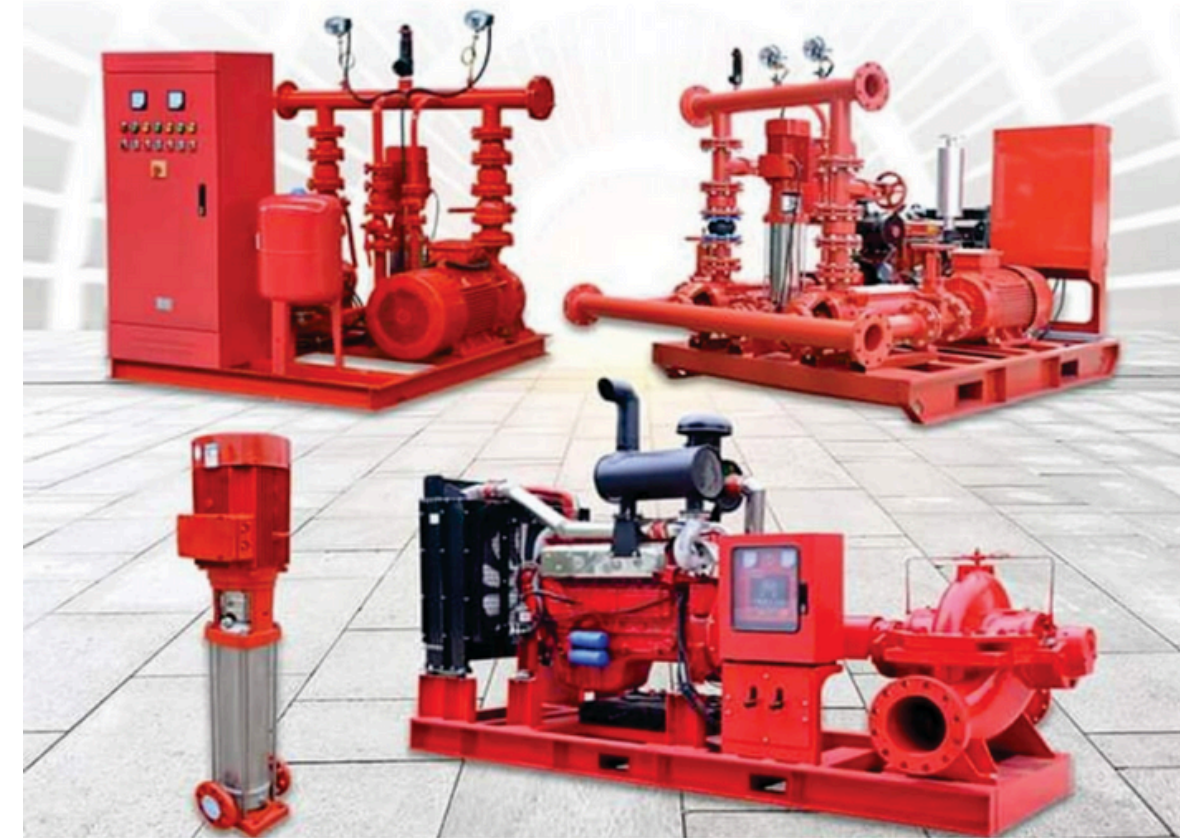


# OUR PRODUCTS

Technical Specification



Hydrant Pillar



NFPA 20 Compatible Firefighting Transfer Pump  
300 GPM + 500 GPM + 750 GPM + 1000 GPM



Complete Accessories Set



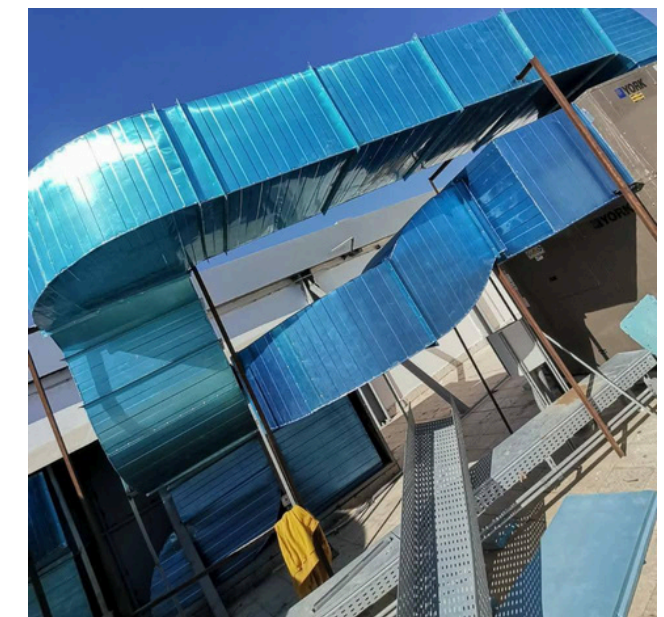
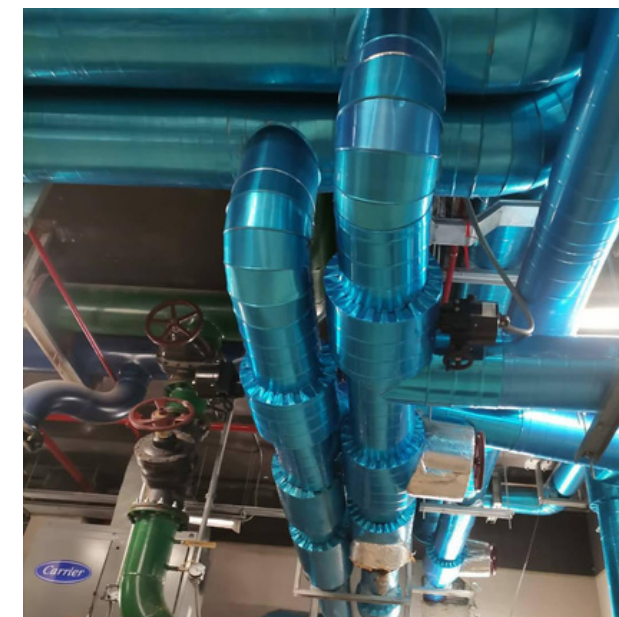
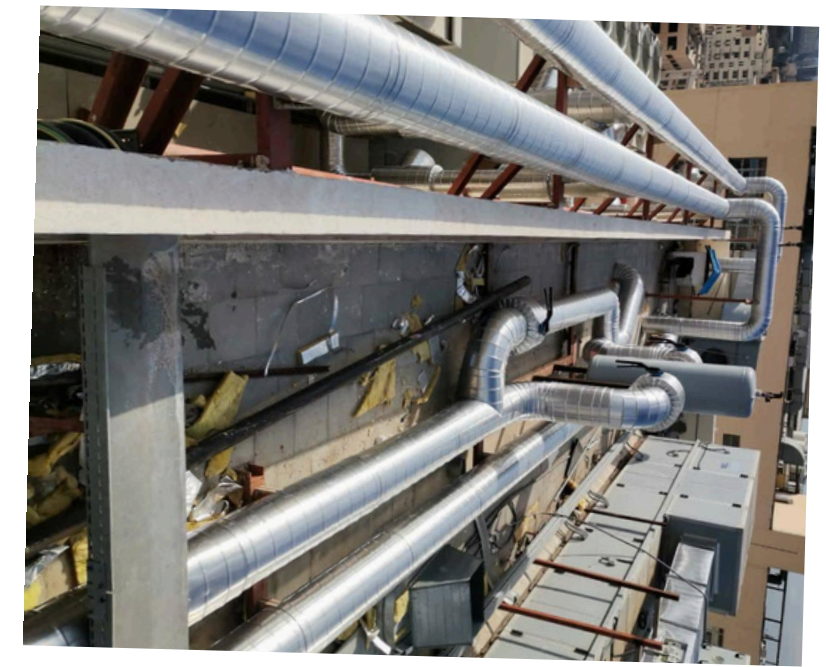
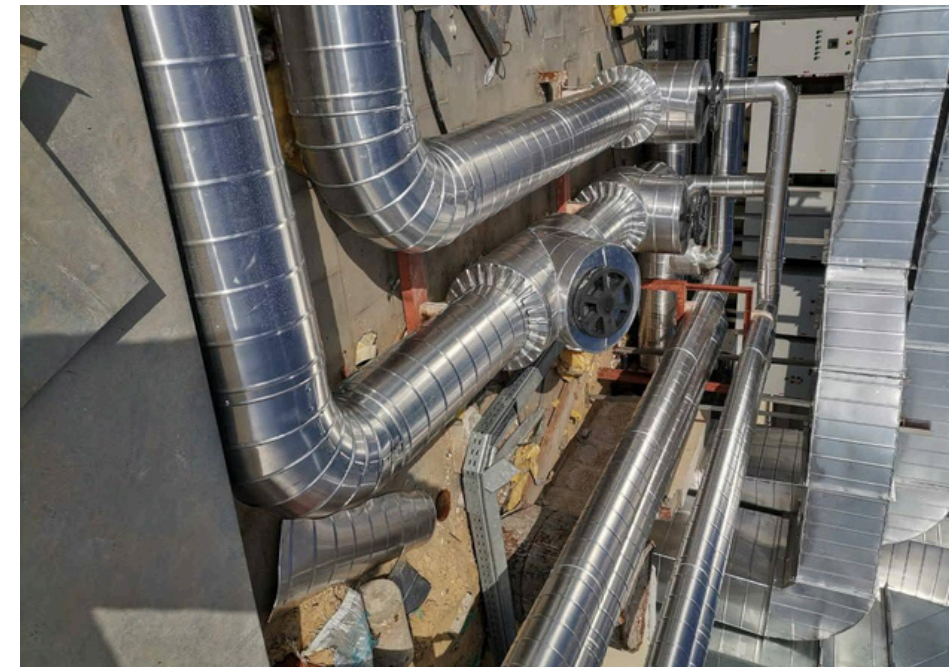
Complete Accessories Set



Seamless MS Pipe  
Shcedule -40



# OUR PROJECT



## HVAC Installation Project

We completed the HVAC installation with efficient ducting, piping, and system testing. The project ensured reliable climate control, energy efficiency, met all safety and performance standards. meeting all safety and quality standards.



# OUR PROJECTS



## Structural Works:

We are specialized in civil construction, including bar bending, concrete work, and structural development. Our expertise ensures strong foundations, durable structures, precise reinforcement, and high-quality finishes for industrial, commercial, and residential projects.



# OUR PROJECTS



## Civil Construction Work:

We specialize in civil construction, including our recent bridge project, delivering high-quality concrete, bar bending, and structural work. Our expertise ensures durability, precision, and efficiency for long-lasting and reliable infrastructure development.



# OUR PROJECTS



## Excavation Works:

We recently completed a major excavation project, including site preparation, trenching, and foundation digging. Using advanced equipment and skilled manpower, we ensured safe, precise, and efficient earthmoving for seamless project execution.



# OUR PROJECTS



## Electricity Tower Installation:

We successfully completed the installation of a major electricity tower, ensuring safety, precision, and reliable power distribution.



## Interlock & Curb Stone Works:

We have completed curb stone and interlock work, providing durable, precise, and visually appealing solutions for roads, pathways, parking areas, and commercial spaces.



# OUR PROJECTS

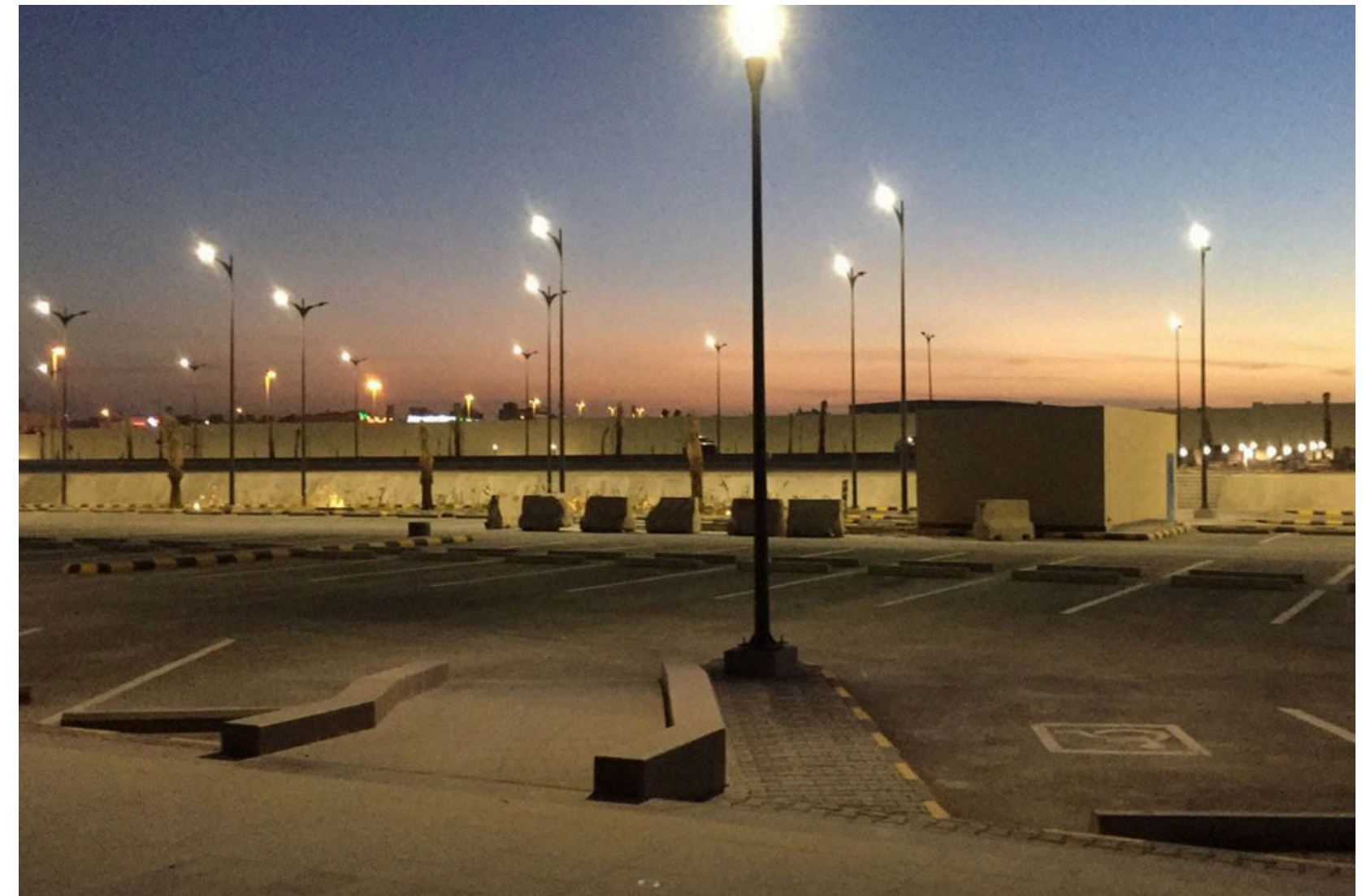
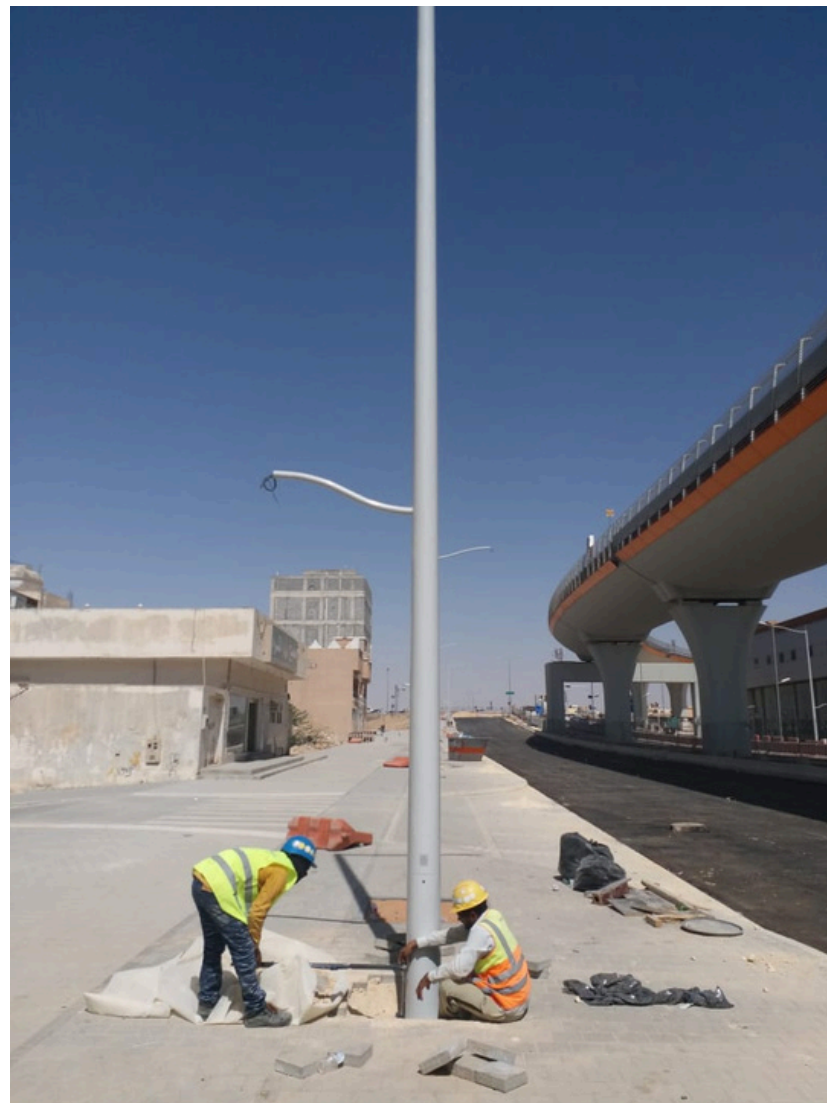


## Fence Works:

We provide reliable fence work solutions, including installation of chain-link, steel, and security fences. Our services ensure safety, durability, and boundary protection for residential, commercial, and industrial properties.



# OUR RECENT PROJECTS



## Street Lighting Poles Installation:

We completed the street lighting poles installation project, which included excavation, foundation construction, pole erection, cable laying, and light fixture installation. Our team ensured proper alignment, secure connections, and energy-efficient lighting. The project improved road safety, visibility, and night-time security, meeting all technical and safety standards.



# OUR PROJECTS

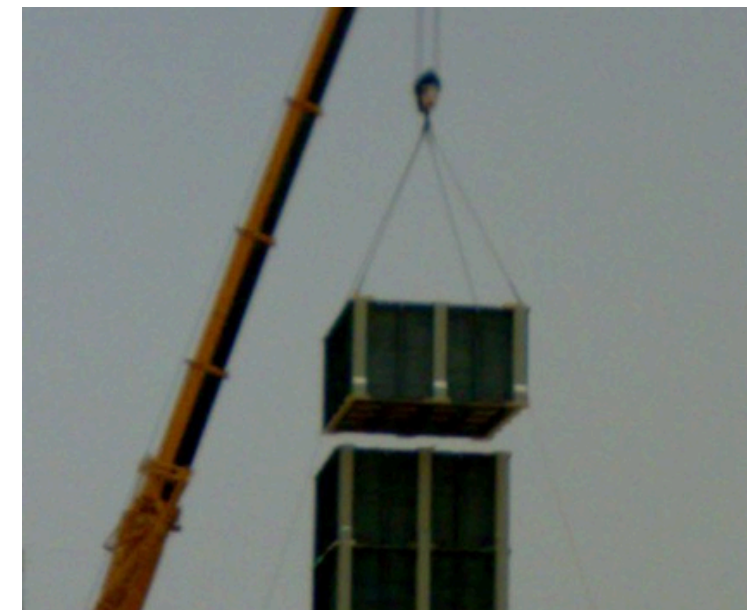


## Pipeline Projects :

We recently completed a pipeline project, focusing on precise installation, seamless connections, and ensuring safety and durability. Our team ensured compliance with industry standards, delivering reliable and efficient infrastructure for fluid transportation.



# OUR PROJECTS

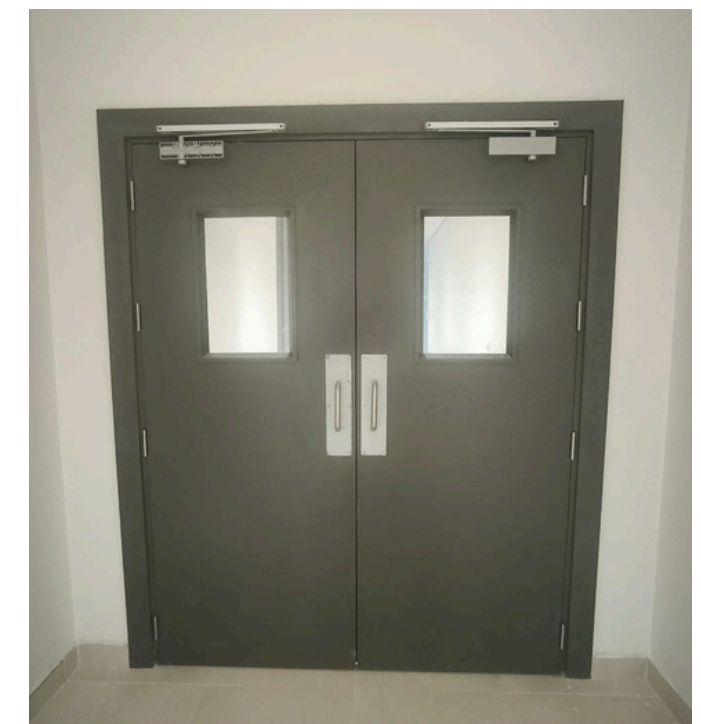
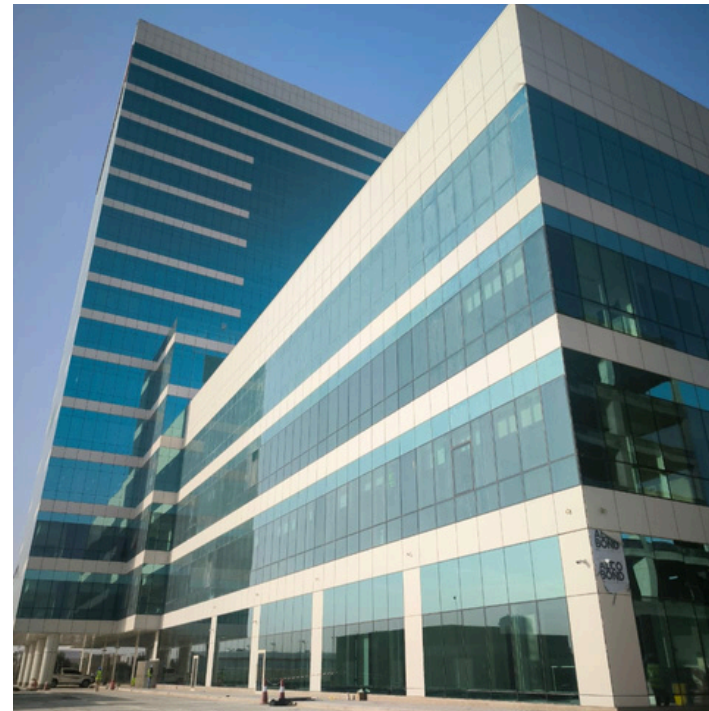


## Mechanical Works:

We specialize in mechanical works, including installation, maintenance, and repair of systems such as HVAC, piping, and equipment. Our skilled team ensures precision, efficiency, and long-lasting performance across industrial and commercial projects.



# OUR RECENT PROJECTS

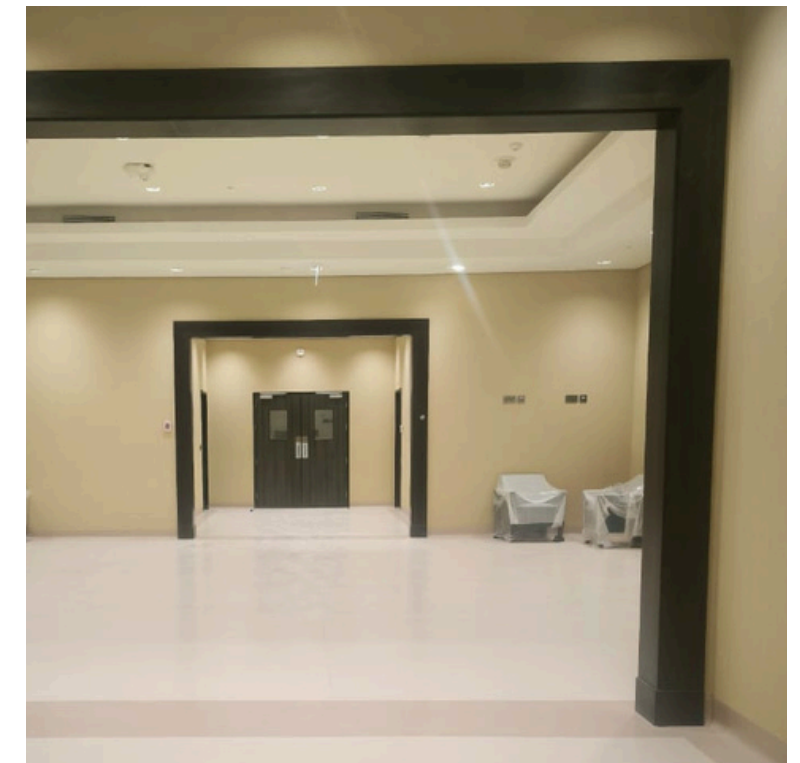
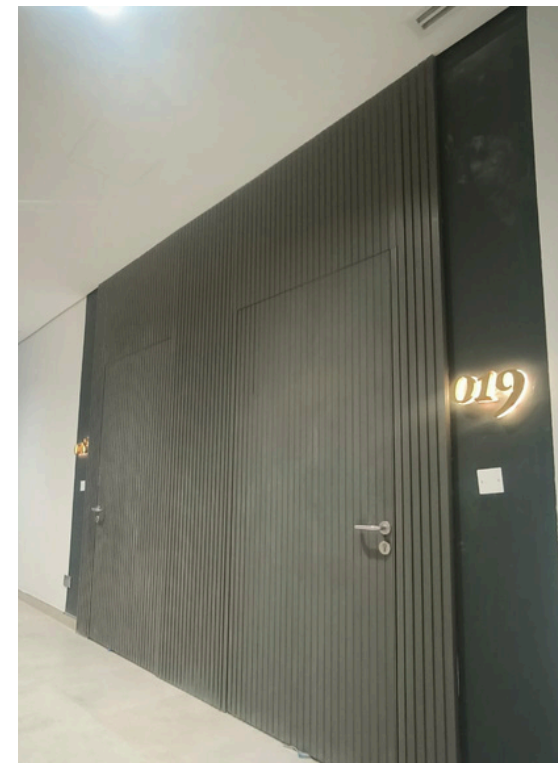
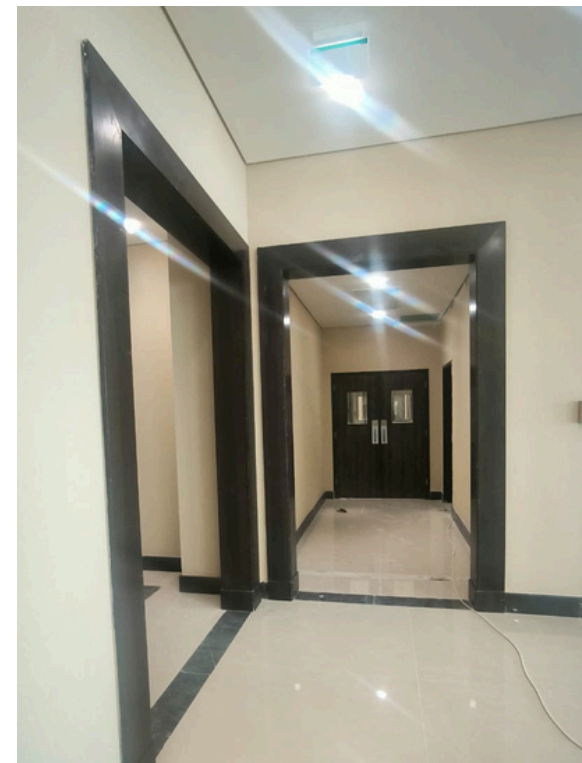


## Furnishing Works:

For the Dr. Sulaiman Al Habib Hospital project, we managed all aspects of door work, including the installation of wooden, metal, and automatic doors. Our team ensured precise fitting, superior quality, and security features, contributing to the hospital's safety, aesthetics, and smooth operation. Our work complemented the facility's modern design.



# OUR RECENT PROJECTS



At Dr. Sulaiman Al Habib Hospital, we provided prestigious wood decors, enhancing the aesthetic appeal with high-quality craftsmanship, ensuring elegant finishes that complement the hospital's modern design and prestigious reputation.



# MANPOWER RENTAL



## Manpower:



Our skilled professional manpower comprises trained technicians, engineers, and supervisors with extensive experience across various industries. They deliver high-quality workmanship, ensure safety compliance, and maintain efficiency on every project. Their dedication, expertise, and problem-solving abilities help us meet project deadlines and client expectations with precision and reliability.



# EQUIPMENT RENTALS



**Grader**



**Loader**



**Bulldozer**



**Excavator**



**Bobcat**



**Crane**



# EQUIPMENT RENTALS



**Compactor**



**JCB**



**Telehandler**



**Generators**



**Boom Trucks**



**Fork Lifts**



# TRANSPORT & LOGISTICS SERVICES



**Coasters**



**Buses**



**Hiace**



**Dump Trucks**



**Pickups**



**Dyna Trucks**

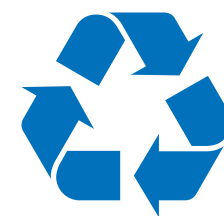




BLUE CONSTRUCTION COMPANY (BCC)

# CORPORATE SOCIAL RESPONSIBILITY

- **BCC-** Ensure a safe and healthy working environment for all employees.
- Conduct regular risk assessments and implement control measures.
- Provide ongoing health and safety training.
- Comply with all legal and regulatory requirements.
- Promote a safety-first culture at every level.



## Environment

We are committed to sustainability, reducing waste, conserving resources, implementing eco-friendly practices, and ensuring environmental responsibility.



## Safety & Health

We maintain workplace safety through strict procedures, regular risk assessments, and employee training. By focusing on accident prevention and regulatory compliance, we ensure a secure and efficient environment for all workers across every project stage.



## Quality Standards

We uphold the highest quality standards through precision, efficiency, compliance, innovation, durability, and continuous improvement in every project.



# LEADERSHIP TEAM

Meet our leadership team, a group of experienced and visionary professionals dedicated to driving innovation, excellence, and success across all our projects.



**Mr. Noor Ullah Amiri**  
*Director*



**Mr. Rahim Ullah Amiri**  
*Operations Manager*



**Mr. Waseem Chouhan**  
*General Manager*



**Ashfaq Ali Shah**  
*HSE Director*



**Engr. Mehdi**  
*Sales Manager*



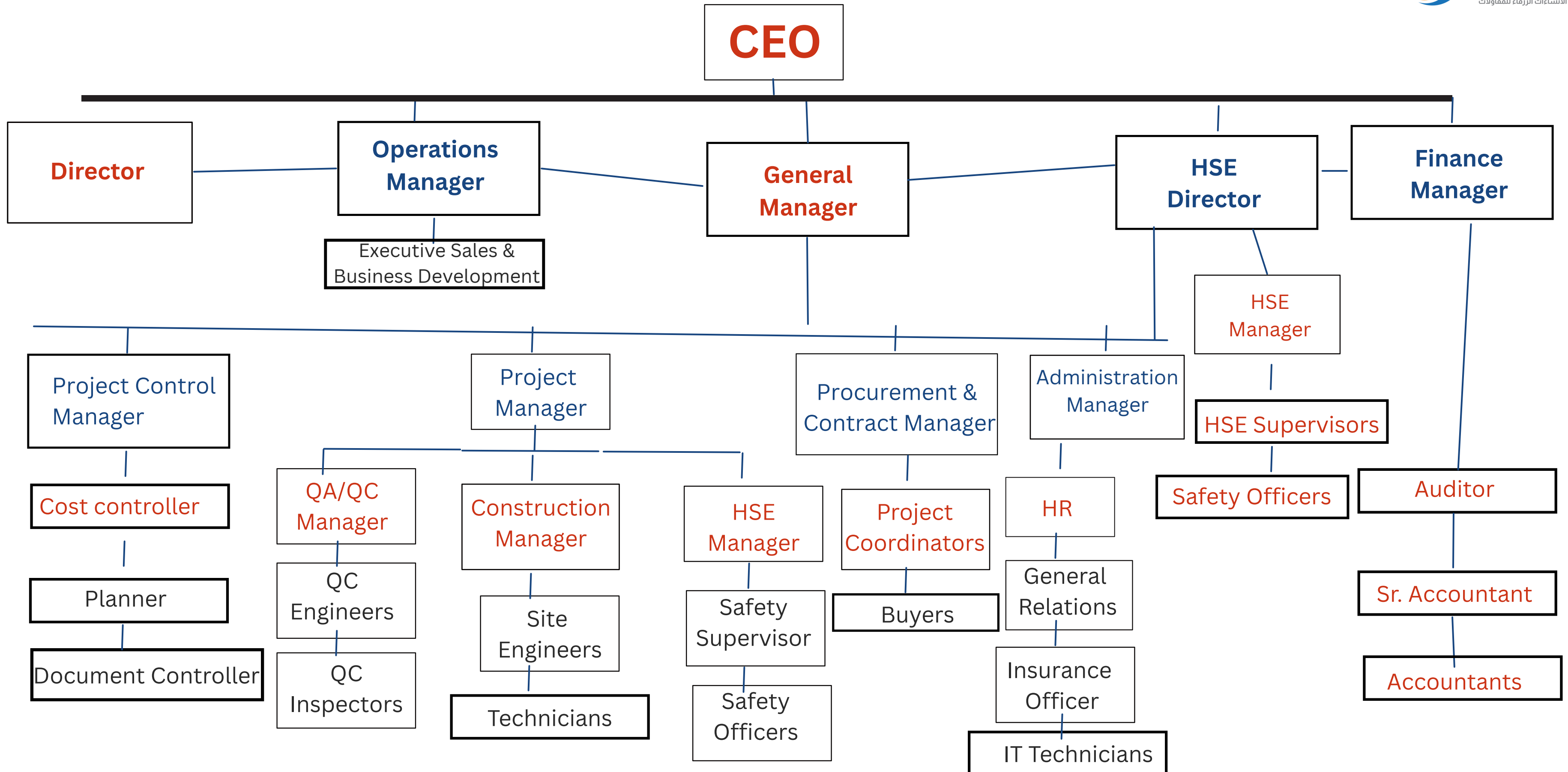
**Mr. Muhammad Asif**  
*Project Manager*



**Mr. Bilal Chouhan**  
*Finance Manager*



# ORGANIZATIONAL CHART







# BLUE CONSTRUCTION COMPANY

Solid foundations for a brighter future

## Email

- [info@bcc-saudi.com](mailto:info@bcc-saudi.com)

## Phone

- (+966) 13 766 8497
- (+966) 59 122-4433

## Head Office :

- King Fahad Road, Al-Hafuf, KSA.

## Branch Office :

- King Abdullah Road, Al Jubail, KSA.

## Branch Office :

- Al-Qalam Road Qurtutba , Riyadh , KSA



[bcc-saudi.com](http://bcc-saudi.com)





# BCC

blue construction company  
شركة الانشاءات الزرقاء للمقاولات

## BLUE CONSTRUCTION COMPANY

Solid foundations for a brighter future

